



MIGRATIONS

THOUGHTS AND REFLECTIONS FROM THE AFRICAN BUSH

Dear Friends,

We have decided to develop a newsletter to keep everyone informed of what we have been doing and what new and exciting trips Anne has discovered each year. There is no spectacle more incredible than the great annual migration of wildlife in the Serengeti and the Masai Mara. *Migrations* will be devoted to the discovery of new and exciting destinations where one can still experience and catch a glimpse of wild places where the forces of evolution are the only laws that apply. Anne created A.K. Taylor International Ltd. to share her

connection one develops. A.K. Taylor International is devoted to finding special places all over the world where one can reconnect with nature and in turn, oneself.

We believe that we have a responsibility to help protect and ensure the continued survival of the wildlife and areas that we visit. It is this belief that recently directed us to pledge a lot of our time and a percentage of our annual profits to conservation initiatives. For more information about our current projects see pages 5 - 6.



FARLEY TAYLOR



is working at Duke University as the women's assistant tennis coach. She graduated from the University of Texas with a degree in sociology and led the women's tennis team to a national title. She plans on working in the office and in Africa this summer and will be leading a trip with Anne. She enjoys photography and the detailed planning that goes into creating a perfect trip.

KAYHAN OSTOVAR



recently completed his Master's degree in Wildlife Biology, managing a team conducting bighorn sheep research in Yellowstone National Park. He has worked as a guide and wildlife biologist in Yellowstone, Africa, the Canyonlands, and Costa Rica. He has also traveled extensively in Mexico, Central America, Peru, Bolivia, Europe and Africa. He especially enjoys adventure travel and has completed several long distance sea kayaking trips. More recently he has been heavily involved in helping start the Anne K. Taylor Fund and putting together the conservation project teams in Kenya. He loves sharing his passion and knowledge of wildlife and ecology.

A HISTORY OF HIGHLY PERSONALIZED SERVICE

Anne's goals have always been to keep her business at a scale where she can retain a highly personalized service and relationship with her clients. Everyone in the office has traveled extensively and experienced first hand many of the properties where we send people.

Since this is our first newsletter we would like to introduce our dedicated staff that have worked in the office or abroad for A.K. Taylor International during the past few years. In addition to Anne's expertise, both Farley and Kayhan's international travel experience provides clients with a wealth of first hand knowledge about many other destinations. Farley recently completed a one-year "world trip", with a focus on Australia, New Zealand, Southeast Asia and South America.



Anne and "Sir Francis Bacon" in the Masai Mara. Read about Sir Francis on page 5.

love of Africa with her clients and friends. Her passion for travel and discovery led her to explore new destinations all across the world. Although Anne has lived in the U.S. for over 30 years, she returns to Africa each year, almost as if by instinct, her annual migration to be amongst the people and wildlife that feed her soul. It is hard to describe the draw of Africa, although many of you who have traveled with Anne may appreciate the almost primal

2724 ARVIN ROAD
BILLINGS, MT
59102 USA
TEL. 406-656-0706
FAX 406-656-7550
e-mail taylor@wtp.net



Artwork by Payam Ostovar



A BRIEF HISTORY

Anne Kent Taylor, the founder of our company, was born in Ethiopia when her father was a Colonel in the British Army developing an officer-training program for Emperor Haile Selassie. She spent her childhood in the Aberdare Mountains of Kenya. Due to the high altitude and climate in these mountains, many British settled in this area and created farms and beautiful “English” gardens with plants from their home country. This region was later known for the Mau Mau fight for independence, which took place during Anne’s early upbringing. After Kenya’s independence the family farm was redistributed to the people of Kenya. Refusing to abandon the country they had come to love, they moved to

Refusing to abandon the country they had come to love...Valerie and John Kent led safaris all across the African continent...

Nairobi where Anne’s parents started Abercrombie & Kent, a photographic safari company that specialized in camping expeditions similar in style to big game hunting safaris. Anne’s mother, Valerie Kent, was one of the first women to work as a safari guide. Valerie and John led safaris



Early days on safari; Anne, Geoff and John Kent.

the African continent, from the northern deserts of Kenya and Ethiopia to deep into the heart of the Congo jungle.

In the early 1960’s Anne began working for her parents and developed a knowledge and deep love for the wildlife and people of Africa. She became addicted to travel and worked her way across Europe, Mexico, Central America and the U.S. While traveling across the U.S. she met her future husband in Wyoming. They married shortly thereafter to start a family on a ranch in Montana.

Meanwhile, Anne’s only brother Geoff, along with his wife Jorie, had taken over the reins of Abercrombie & Kent and were on their way to turning it into one of the most prestigious wholesale travel companies in the world. They developed a global company allowing large numbers of people to experience comfortable international travel.

Anne decided to take her company in a different direction and began leading small groups of friends on highly personalized safaris. She did not let motherhood slow her down and was known to take her children out of school to expose them to international travel.

...Anne’s operation is based on her parents’ legacy of superior service and personalized attention...

She continued to operate her business as a sole proprietorship until her children were grown, whereupon she incorporated A. K. Taylor International Limited. Her company’s operation is based on her parents’ legacy of superior service and personalized attention to small details. In fact, several of



John and Valerie Kent on safari.

Anne's original clients were the descendants of her parents' clients, some of the first intrepid travelers to visit the "dark" continent.

Since starting her business, Anne has developed a network of operators to whom she can entrust her clients. As an independent agent, she is not bound to any particular operator. She carefully examines each clients desired time of travel, their interests and their budget and finds the best operator. Even when booking a group departure, Anne is able to request special services, activities and guides for her clients.

...some of the first intrepid travelers to visit the "dark" continent.

In some cases she uses larger companies like Abercrombie & Kent, in others she uses smaller "specialized" companies or individuals to guide her clients. The latter includes exceptional guides and companies that offer, horseback, camel and walking expeditions in many different countries.

Early in her career Anne decided that she would not sell any trip that she had not been on, or thoroughly researched. This keeps her very busy, traveling for 4-6 months each year, scouting out special new destinations.



Antarctica

This icy continent was surprisingly one of Anne's favorite trips. For someone who dislikes the cold and is accustomed to *terra firma*, she found the stark blue landscapes enchanting and loved learning about the marine mammals and birds from the on-board scientists.

Due to Anne's love and knowledge of wildlife, she directed her energy to serve on several conservation boards, like Wildlife Preservation Trust, where she served for 15 years. Anne just rotated off this board to focus her time on her newly established fund. Anne continues working and leading people on trips because of the pleasure she gets from exposing people to the hidden wonders of the world and hopefully creating a 'once-in-a-lifetime' trip for them. Which secluded wonder would you like to explore next?



A camel safari is a great way to experience the wilds of Africa at the pace of an ancient creature.

ANNE RECOMMENDS

Antarctica expeditions, Inca Ruins and the Amazon, the Galapagos, Kilimanjaro or Himalayan treks, tigers in India and Nepal or even a luxurious world trip by private jet.

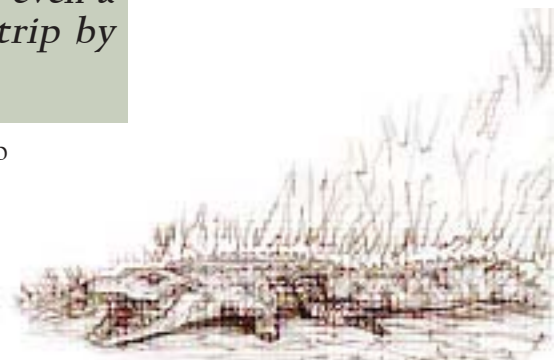
Letters from recent travelers

Dear Anne,

Our trip to Africa was exquisite – marvelous, wonderful, magical. I must tell you that within minutes of being there, my first time in the bush in Africa, surrounded by wild elephants, tears streaming down my cheeks, it was like I was home at last. What you did for us is priceless. I feel so very lucky to have found you and to have had you plan our trip! I have always wanted to begin to get a real feeling beyond any drama, to really start to know Africa. I realize this would take a lifetime but I felt that with you I was seeing the real Africa. Now I know that I am in love with Africa and want more. With much love, Lori

Dear Anne,

I fell in love with Africa, as I know you understand, it's hard to explain quite the effect of this experience on a person, to be able to spend a few days in that glorious environment. It was made extra special by the fact that you shared it with us – in fact it was somehow like a gift from you. I hope we'll be able to do another trip soon - maybe next January? Much Love, Heidi




ANNE K. TAYLOR FUND

From time to time we will include information on conservation work that is in progress or currently supported by A.K. Taylor International. We have recently created the Anne K. Taylor Fund, which is dedicated to preserving and protecting the wildlife resources, landscapes and communities where we work and send guests.

THE STORY OF "SIR FRANCIS BACON"

In 1998, Anne began to receive visits from a large male warthog that lives near her cottage in the Masai Mara. He was fond of grazing on her lawn and lying in the sun in front of her verandah. He became accustomed to the presence of people, eventually receiving the name Sir Francis Bacon. He even allowed Anne to touch his bristly back and scratch his sides when he rolled over like a puppy. One morning in 1999, he came up to Anne's house with an arrow embedded deeply in his side. Anne was able to organize for some Kenya Wildlife Service veterinarians to come down and surgically remove the arrowhead. Sir Francis successfully recovered and guests to the Mara can still enjoy him peacefully grazing, albeit with a few scars.

Because of what had happened to Sir Francis, Anne feared an increase in poaching activity, and began to informally patrol the region searching for other injured animals. Anne's fears were justified when she found three elephants and two giraffe that had become badly entangled in life threatening snares. 



Anne and the Kenya Wildlife Service rescue team.

A NEW THREAT TO AFRICA'S WILDLIFE

Poaching for ivory and rhino horn have historically devastated populations of elephant and rhino all over Africa. Kenya has often led the African nations in their battle against poaching. Currently a new form of poaching, the commercial bush meat trade, threatens the continued survival of the wildlife in Africa. Efforts are being taken in many parks in Kenya to increase patrols and remove wire snares set by poachers. One of the horrible consequences of snaring is that it is not species-specific and can indiscriminately kill and injure other non-target species. Anne K. Taylor Fund wishes to support those working hard to manage the precious wildlife resources of the Masai Mara.



This elephant is now in good condition after a life-threatening snare was removed and the wound treated.

SUCCESSFUL ASSESSMENT PROJECT

During the last two years, Anne K. Taylor Fund has participated in and supported rescues of several elephants and giraffe. Anne K. Taylor Fund decided to undertake a thorough assessment of the



poaching pressure and immediately address the issue with active snare sweeps and patrols. In addition, we have established an injured animal reporting system among the drivers and guides in the lodges. This will enable us to quickly find and treat injured animals in conjunction with the Kenya Wildlife Service.

CONSERVATION NEWS

We chose to work with Youth for Conservation (YFC), a group of young, highly motivated Kenyan's concerned about the future of their country's wildlife resources. YFC has considerable experience in desnaring projects and has been successful in removing over 2,500 snares from parks all around Kenya. Our assessment of the level of poaching in the Masai Mara (conducted between September and November 2000) revealed a problem that will require an increase in the number of patrols and snare removal projects to protect the wildlife.

Anne K. Taylor Fund has also developed a program to continue with the wildlife rescues that Anne began two years ago. We hope that our continued antipoaching and desnaring projects will reduce the need for these rescues. Until that time, we are sponsoring and actively taking part in wildlife rescues in the Masai Mara with the Kenya Wildlife Service.

One of our greatest achievements during the assessment project was the development of unified support from tour operators, camps and lodges. We would like to thank Abercrombie and Kent, Serena Hotels, Conservation Corporation Association and Air Kenya. We would especially like to thank the Honorable Minister, Julius Sunkuli, John Ole Naiguran, and the Maasai County Council of the Trans Mara for taking a proactive approach to control the poaching pressure. Under their guidance we worked with Youth for Conservation and the wardens and rangers in the Trans Mara to make this project a success.
Asante sana to everyone.



Desnaring Team: Martin, Jacob, Evanson and Frank.

FUTURE WILDLIFE PROTECTION PROJECTS

We have now established an efficient system to conduct anti-poaching and desnaring patrols and wildlife rescues. We estimate that about ten two-week projects per year will be needed to curb the poaching pressure in the Masai Mara. There is evidence that increased patrols and snare removals cause a decline in the level of poaching. We have planned and hope to receive financial support for a three-year project that will slowly be phased out when local capacity is developed.



Wire snare for large game.

COMMUNITY PROJECTS

We feel that community education and involvement are vitally important for the continued success of our projects. We have met with the local Maasai council to receive approval for our work. In order for the community to realize positive feedbacks from our projects we will hire some local Maasai for the teams. In addition, we have organized presentations and guided game drives for children in local communities to learn about the importance of protecting wildlife.

MISSION STATEMENT

Anne K. Taylor Fund was created to encourage and assist individuals, communities and corporations to conserve, protect and restore biodiversity through sound economic activities that are ecologically sustainable.

The Anne K. Taylor Fund is supported by A.K. Taylor International, which donates a percentage from every safari we sell to the Fund. We encourage and seek support from other tour operators in the areas of our projects. In addition, we hope our friends and clients who have enjoyed visiting remote areas with us all over the world will contribute to our current project in the Masai Mara. We thank the generosity of those first few friends and the Born Free Foundation who made this initial assessment possible. Without their assistance we could not have begun this important work of protecting Africa's wildlife. 

We would also like to thank Friends of Conservation for assisting this project by allowing us to use their tax-deductible non-profit status.

Please make donations to:
Friends of Conservation
Ref: Anne K. Taylor Fund
2724 Arvin Road
Billings, MT 59102
U.S.A.



2001 INVITATIONAL

View from the escarpment of the Masai Mara plains.

For this year's special A. K. Taylor Invitational, Anne will be guiding friends to a select list of some of the best places in Kenya. We have specifically chosen places that are making major contributions to the protection and conservation of wildlife. If you have more than two weeks to spare Anne highly recommends spending more time in some of the other small properties in Kenya. We are offering special extensions (from 1-14 days) before and after this safari.

For extensions, Anne recommends the home of Rocky and Colin Francombe, which provides the perfect place to get acclimated to the pace and style of African life before heading out on safari. This is one of our client's favorite places in Kenya. Colin and Rocky, after many years of ranching in Kenya, purchased this magnificent piece of land for their dream home and to help conserve some of Kenya's rare northern wildlife species.

We would also suggest ending a safari at the coast or venturing to Tanzania to search for the migration. Please call to see what best suits your interests.

January 20 - Your Safari Begins

On arrival you will be met outside Customs and taken to Ngong House, which is a private home situated in Langata, approximately half an hour from Nairobi. Far from any main roads and secluded on 10 acres of private land, you can enjoy stunning views of the Ngong Hills from the deck of your "tree-house".



Built entirely of wood, the treehouses are on two levels with a bed-room area up-stairs and a living space on the lower floor.

They are raised 15 feet from the ground to gain uninterrupted views of the Ngong Hills. The houses are designed to be elegantly rustic with an African theme and are furnished with every comfort in mind. The food at Ngong House is of the very highest quality, prepared with fresh Kenya vegetables, meat and fish. *Overnight: Ngong House (Full Board)*

January 21, 22, 23

This morning you fly south into the Chyulu Hills to a beautiful new camp situated on over 500,000 acres. Luca and Antonella Belpietro moved from Italy and built Campi Ya Kanzi, which is devoted to helping the Maasai conserve their wildlife heritage through tourism.



The camp has been built with as little impact on the land as possible, utilizing the latest developments in environmentally sustainable technology. Electricity is provided by solar cells and solar heaters heat the water. The cooking is done with recycled coffee husk briquettes and toilets operate on a dual flush system with gray water



filtered separately through volcanic rock into water holes to attract more game. Having been raised around big game hunting in Africa, Luca has now devoted his efforts to protecting Africa's wildlife. He has implemented many programs with the Maasai to help support their culture and protect wildlife.

Owing to the greatly diverse habitat within the ranch, a wide range of wildlife is found here including oryx and gerenuk, which are usually associated with dryer northern areas of Kenya. Recently, herds of 100+ elephant have been spending time nearby, as well as cheetah and a pride of 13 lion. Perhaps the greatest charm lies in the vast and mainly uninhabited panoramas, dominated by the snow capped peaks of Mount Kilimanjaro. Activities here can include walks through the bush with Luca and Maasai guides as well as game drives to see the wildlife and visit the Maasai communities. A special added bonus – the food is DELICIOUS – not to mention the imported wine from Italy.

Overnights: Campi ya Kanzi (Full Board).

Termite mounds provide good vantage points for cheetah.

January 24, 25, 26

This morning you will take a private charter to Nanyuki where you will be met and driven a short distance to Lewa Downs. The Lewa Wildlife Conservancy is registered as a not-for-profit and is a unique initiative in private sector wildlife management, whereby all the generated income goes directly back into conservation and community development. Two of Anne's friends, John and Lulu Clark, recently helped The Conservancy refurbish a tented camp on this 40,000-acre property in the northern foothills of Mount Kenya. John and Lulu bring a wealth of experience in tourism and conservation to the Lewa Conservancy.



The Conservancy is blessed with particularly rich and diverse wildlife. In fact, Lewa has been so successful in protecting their animals that they have been able to translocate some species to other reserves and parks in Kenya. Lewa is also one of the best places to learn about new conservation initiatives in Kenya and see some of the more rare and endangered species like black and white rhino and Grevy's zebra. The scenery is spectacular, with Mount Kenya dominating views to the south and the renowned Northern Frontier District stretching dramatically to the north.

Overnights: Lewa Tented Camp (Full Board)



January 27, 28, 29

After breakfast this morning you will fly to the Masai Mara and settle into a permanent tented camp called Olonana. This camp is idyllically situated in a rare stand of forest on the banks of the Mara River. Above the camp is the dramatic Oloololo escarpment and across the river (full of hippo and crocs.) a natural salt lick attracts a tremendous variety of game. This new luxury camp comprises just 12 spacious en suite tents offering a high level of comfort and personalized service.



Maasai Moran at Eunoto ceremony.

Olonana was one of the first camps in the Masai Mara to recognize that tour companies need to be responsible to stop the loss of forest habitat. They have instigated a reforestation program and have converted their water heaters to burn carbonized sawdust brought in from Nairobi. In addition, a wetland septic system was built to handle all the wastewater from the camp. This carefully designed system uses organic processes and aquatic plants in a series of pools to clean the water. This is the first of its kind in the Masai Mara and will hopefully prove as an example to other tourist facilities.

The Masai Mara holds the greatest and most diverse concentration of wildlife remaining in Africa today, and is particularly famous for some of the finest scenery to be found in Africa. Camps like Olonana are doing their part to protect these areas. While here you will visit many of Anne's favorite haunts and if interested, see the conservation work she is involved in.

Overnights: Olonana Tented Camp (Full Board)

January 30

You will fly back to Nairobi where you will be met and transferred to Ngong house for the day. You may enjoy spending the day regrouping for your flight and relaxing in the garden and pool area. You could also go shopping or visit Karen Blixen's house. This will also be a transition day for anyone choosing an extension.